

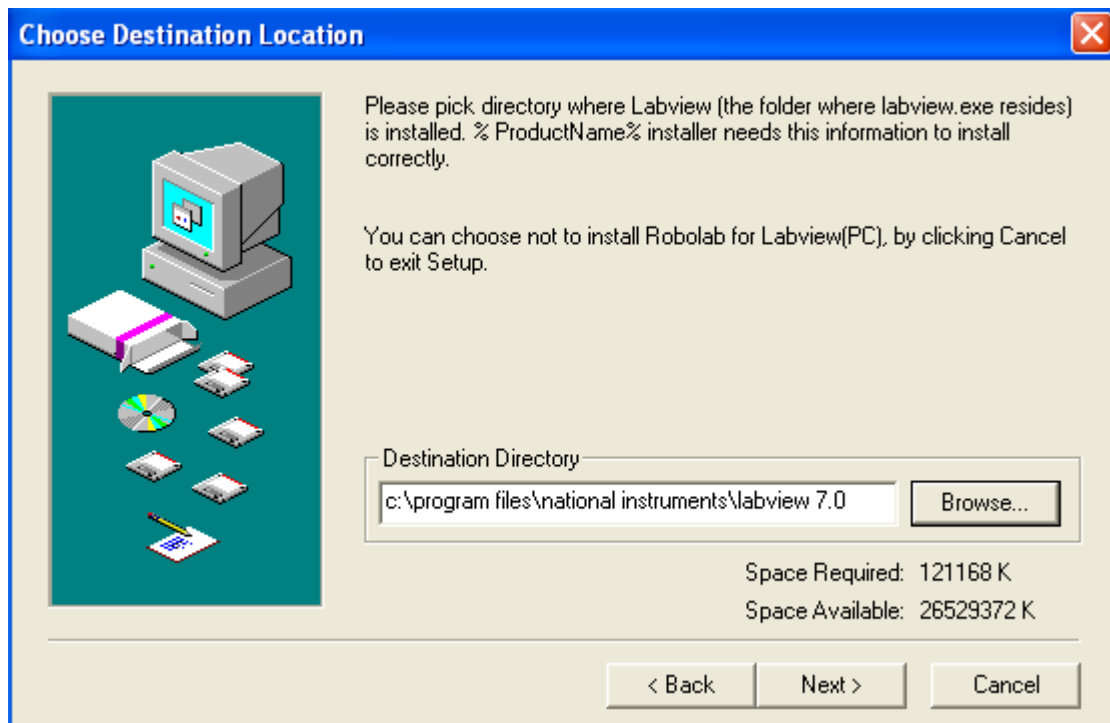
Installing Robolab for LabVIEW

Updated 5/10/05

Step 1) Robolab for Labview can be downloaded from:

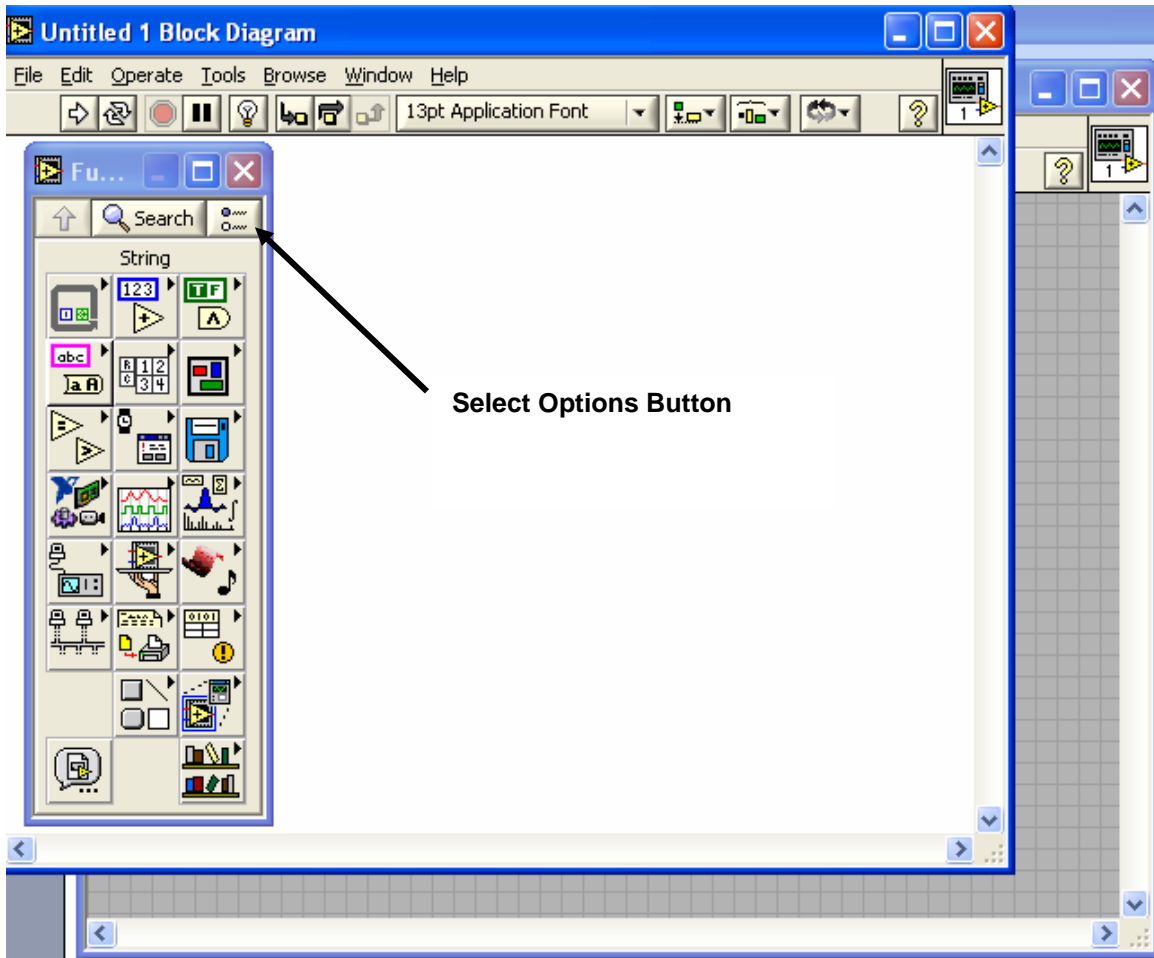
<http://www.ceeo.tufts.edu/robolabatceeo/College/robolabforlabview/default.asp>

After the download is complete, run the file. The setup will initialize and prompt you to select the directory for installation. Install the software in the LabVIEW directory.

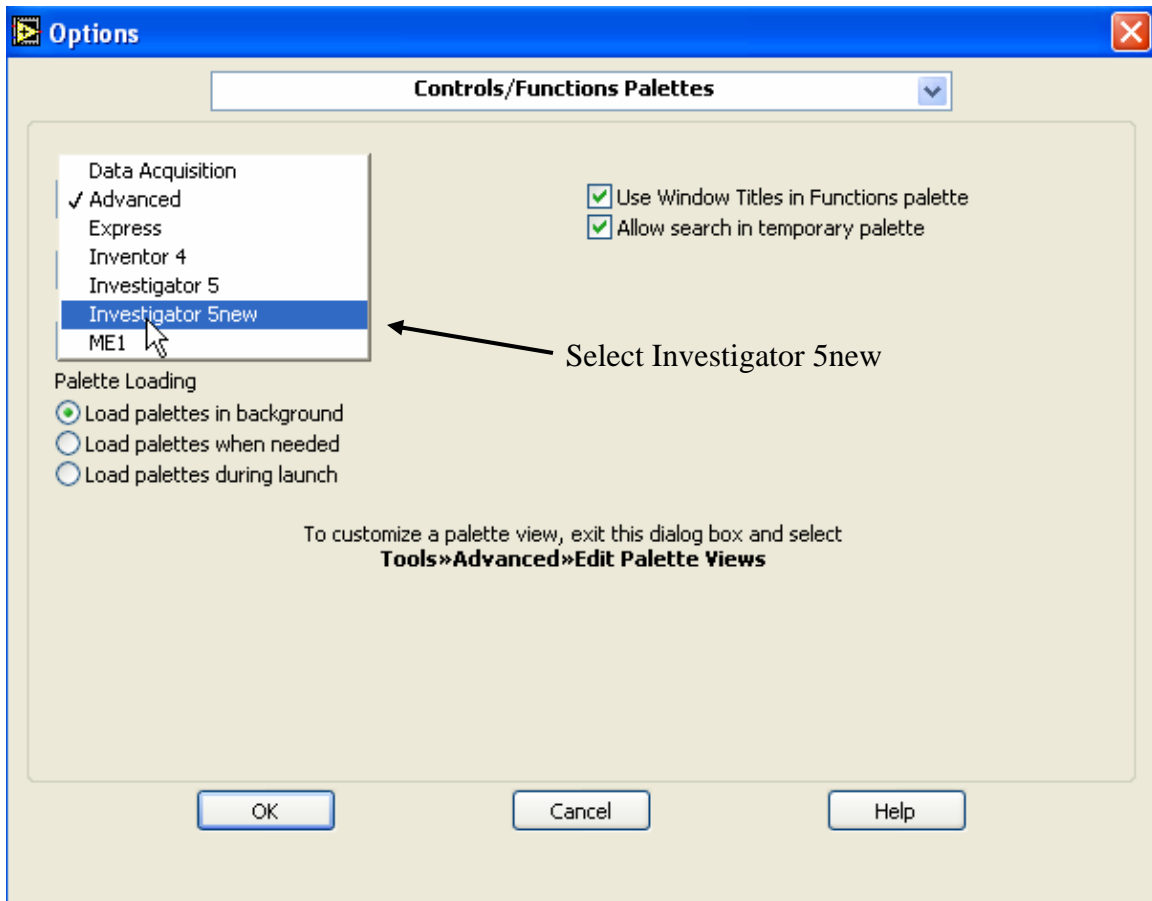


In this case, the software was installed in C:/ProgramFiles/National Instruments/LabVIEW 7.0/. The program may not work correctly if Robolab is not installed in this directory. In addition to installing Robolab, the setup utility will also install quicktime, USB Tower drivers, NI VISA software and WinDIG. This allows the computer to communicate with the RCX, and sets up the necessary camera drivers.

Step 2) Open LabVIEW and create a new .vi. From the Block Diagram, select the options button on the Functions Pallet.



This will open a new window. Make sure that Controls/Functions Pallets is selected in the top drop-down menu. In the top-left there is another drop-down menu for Pallet View. Open this and select **Investigator 5new**. Select OK.



This will change the Functions Pallet to Robolab commands. If at any time the default Labview commands are needed, the pallet can be changed back the same way. If lower investigator levels are needed, select Tools and then Change Investigator Level.

